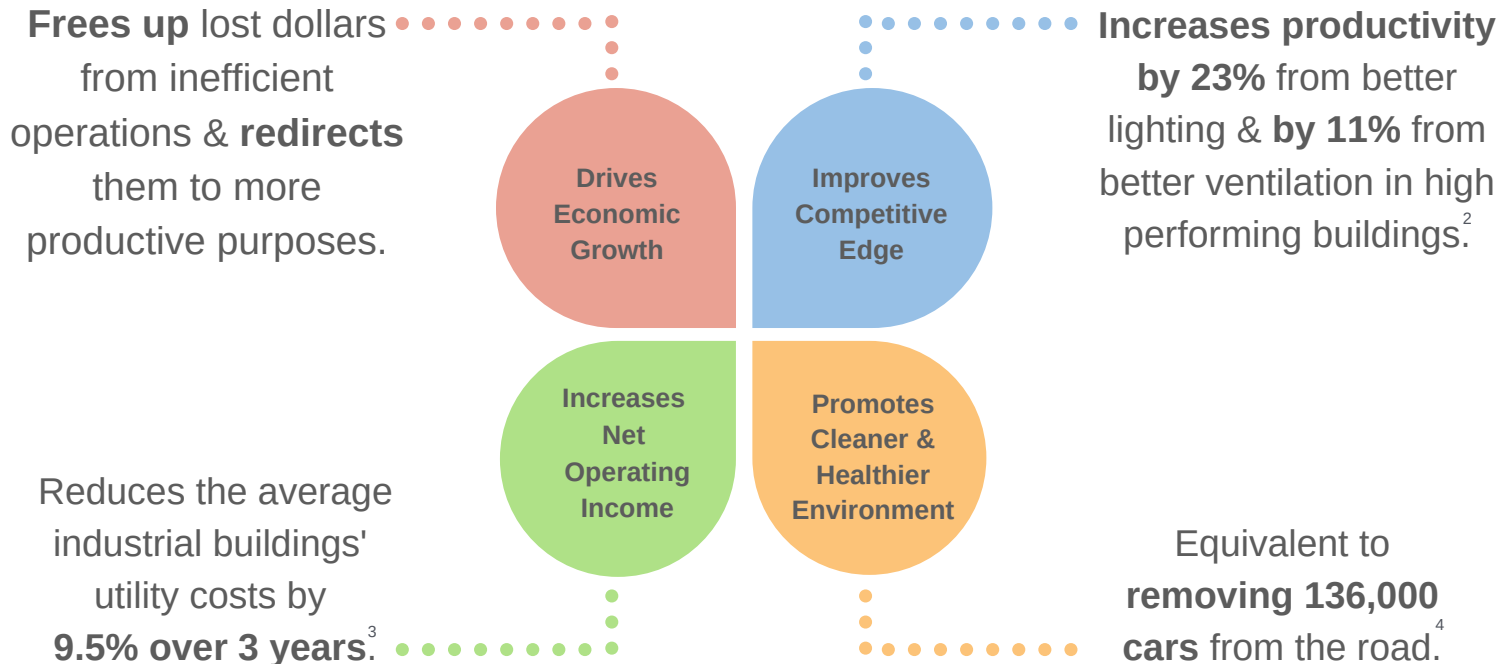


# Columbus is adopting a benchmarking & transparency policy to drive efficiency in our building stock.

## Buildings represent 58% of Columbus' emissions<sup>1</sup>

In benchmarking & transparency policies, buildings track energy & water use over time & report the data to the City & market annually.

## Benefits of Benchmarking Industrial Buildings



**Ready to get started?** Sign up for an ENERGY STAR® Portfolio Manager® account: [energystar.gov/benchmark](http://energystar.gov/benchmark) and enroll in automated benchmarking: [benchmarking.energy](http://benchmarking.energy)

**Want to learn more?** Visit us at [columbus.gov/sustainable/benchmarking](http://columbus.gov/sustainable/benchmarking)

**Have questions?** Contact Jenna Tivalidi at [benchmarking@columbus.gov](mailto:benchmarking@columbus.gov)

1. Mid-Ohio Regional Planning Commission (MORPC) "2018 City of Columbus Greenhouse Gas Inventory"

2. World Green Building Council. "The Business Case for Green Building." 2013. [https://www.worldgbc.org/sites/default/files/Business\\_Case\\_For\\_Green\\_Building\\_Report\\_WEB\\_2013-04-11-2.pdf](https://www.worldgbc.org/sites/default/files/Business_Case_For_Green_Building_Report_WEB_2013-04-11-2.pdf)

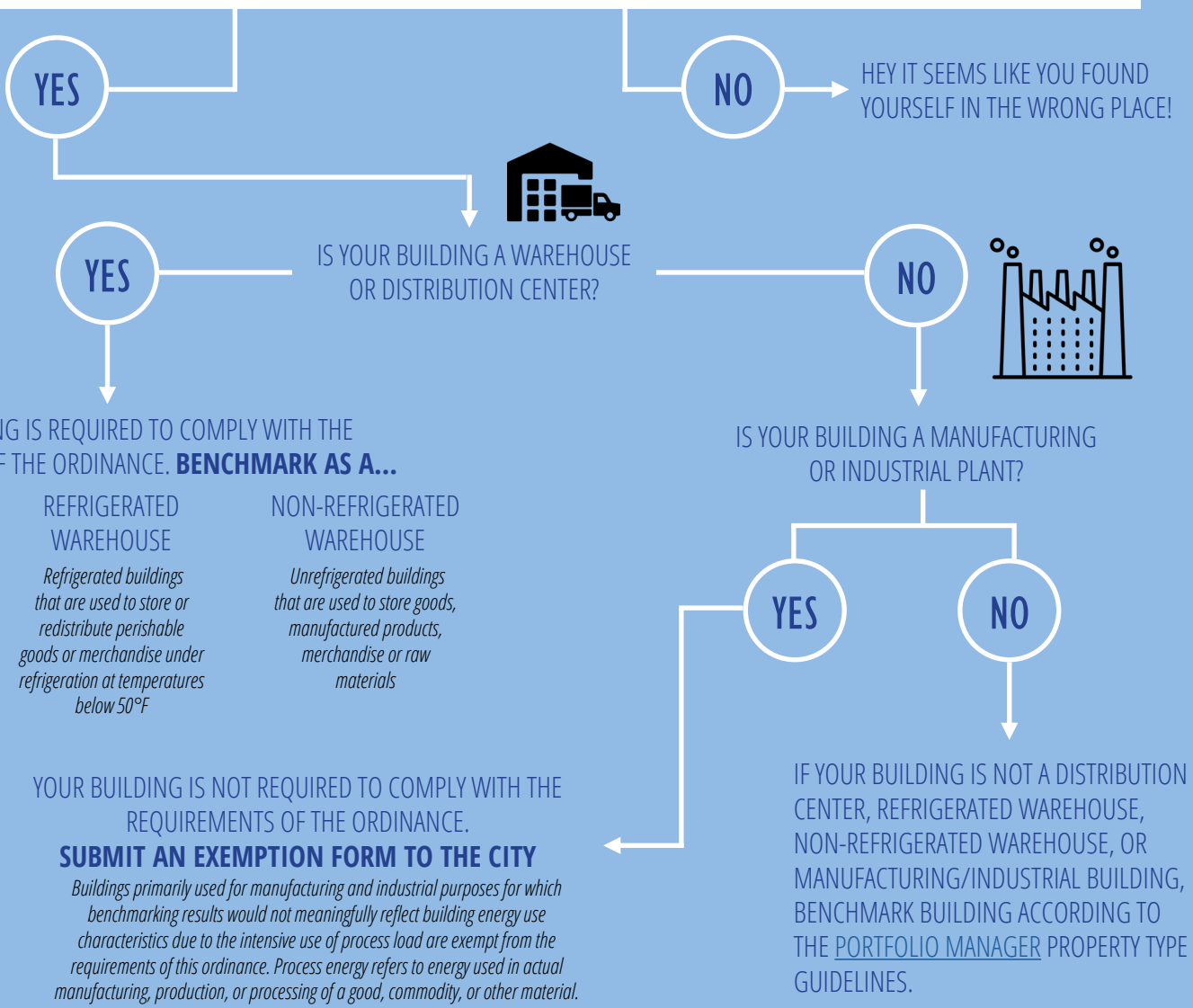
3. "Benchmarking and Energy Savings" (2012) ENERGY STAR Portfolio Manager. <https://www.energystar.gov/buildings/tools-and-resources/datatrends-benchmarking-and-energy-savings>

4. Study conducted by The Greenlink Group for the City of Columbus through the American Cities Climate Challenge



# DO YOU OWN OR MANAGE A INDUSTRIAL OR MANUFACTURING BUILDING OVER 50,000 SQUARE FEET IN COLUMBUS?

Columbus is adopting a benchmarking & transparency ordinance to drive efficiency in our building stock. Follow our decision tree to find out if your building is subject to the requirements of the ordinance.



Have questions? Contact us at [benchmarking@columbus.gov](mailto:benchmarking@columbus.gov)  
 Learn more at <https://www.columbus.gov/sustainable/benchmarking/>