



# RTMC Mobility Study

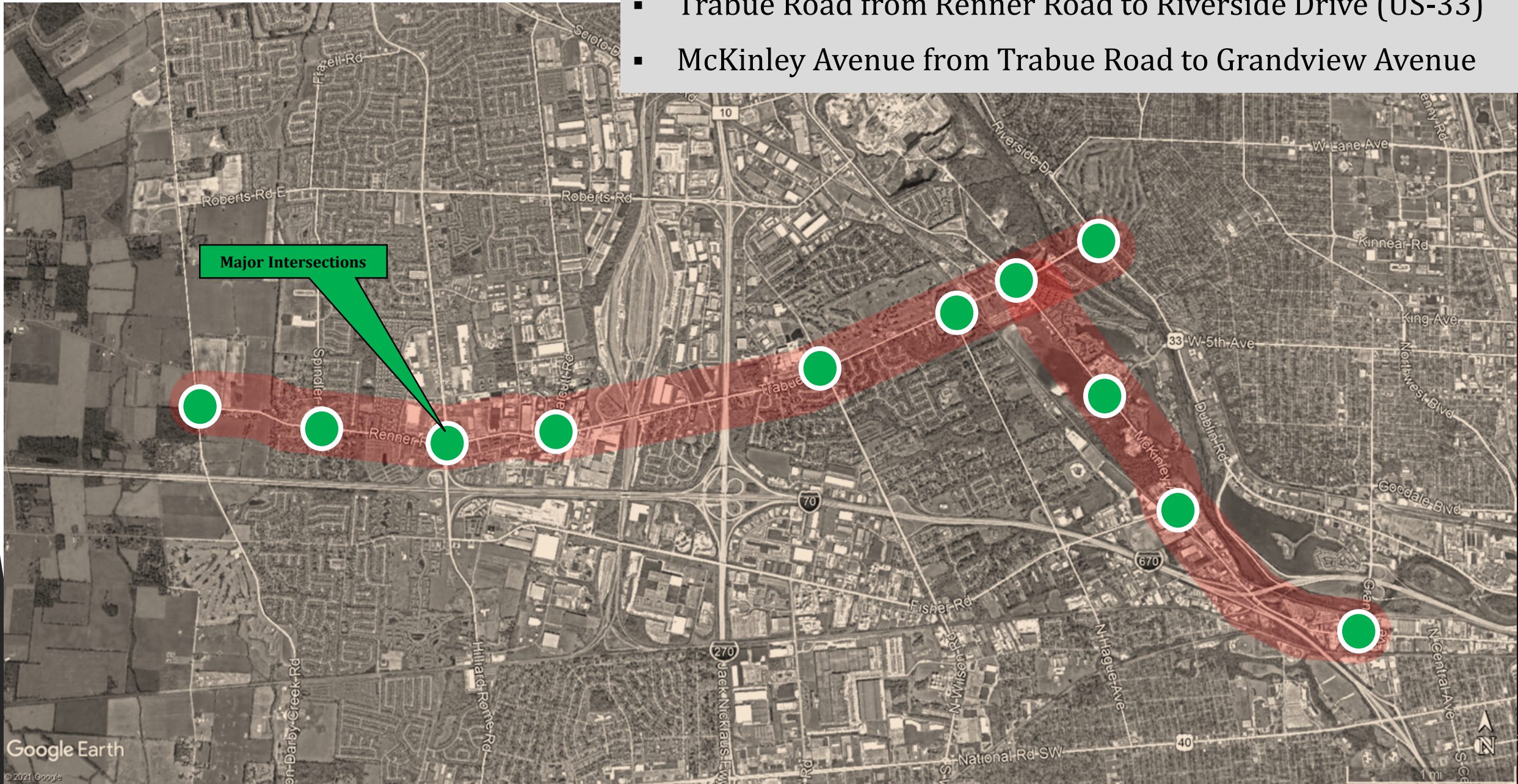
(Renner Road - Trabue Road - McKinley Avenue Corridor)

# Agenda

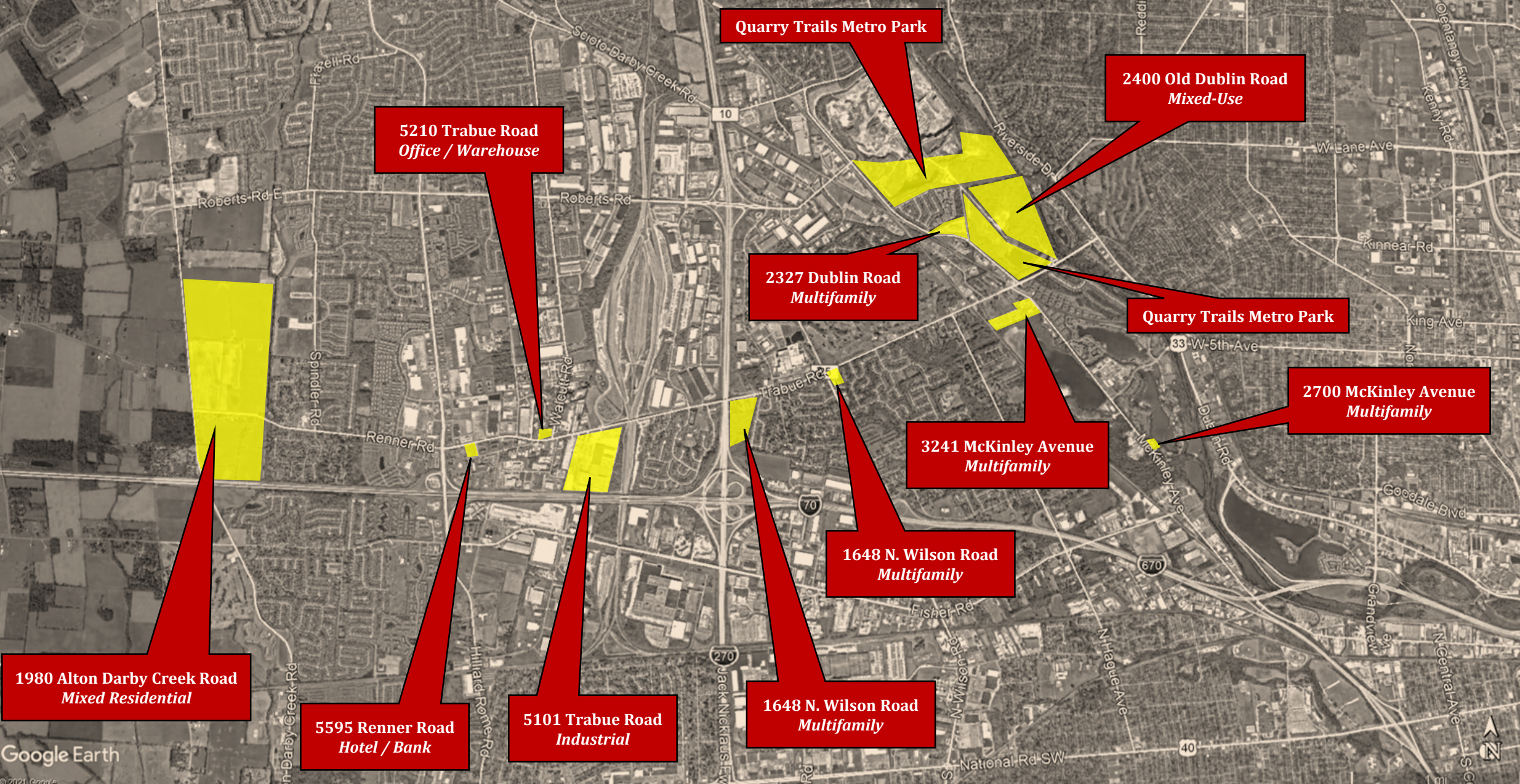
- Study Area & History
- Purpose & Need
- Goals & Objectives
- Scope Outline
- Project Schedule
- Comments/Questions

# Study Area

- Renner Road from Alton Darby Creek Road to Trabue Road
- Trabue Road from Renner Road to Riverside Drive (US-33)
- McKinley Avenue from Trabue Road to Grandview Avenue



# Area Developments



# Purpose & Need

- Pre-existing challenges
  - Mobility concerns
  - Development pressures
- Important corridor
  - Wide range of land uses
  - Connectivity to US-33, I-70, I-670, & I-270
- Growth trends in City of Columbus metro area
- Holistic/comprehensive study
  - Previous traffic study work evaluates at micro scale
  - Mobility study evaluates at macro scale

# Goals & Objectives

- General Goals & Objectives
  - Improved mobility in the RTMC
  - Maximize economic vitality
  - Improve health & safety
  - Improve access to employment
- Steering Committee and Public Input will be utilized to aid project team in expanding goals & objectives
- Use study results to bring forward implementable solutions
- Short & long-term recommendations will be identified so funding can be pursued

# Scope Outline

- Study & Analysis
  - Previous planning efforts relating to all modes of transportation for people and goods
  - Existing and future conditions transportation modes for people and goods
  - Needs and desires of community members and roadway users through creative public engagement
  - Stakeholders / Steering Committee

# Scope Outline

- Project Development – Include, but not limited to...
  - Modifications to existing corridor roadways
  - Modifications to transit system
  - Modifications to pedestrian and bicycling environment
  - Public education efforts
  - Modifications to alternative corridors
- Project evaluation criteria to be developed
- Criteria will be used to evaluate projects to determine priority
- The study will conclude with “next-steps” framework



# Schedule

- COVID-19 impacts on traffic volumes & travel patterns
- Two-part study
  - Part I – Scope items which can be completed *before* traffic and public meetings reach normalcy
  - Part II – Scope items to be completed *after* traffic and public meetings reach normalcy

# Schedule

## *Part I Schedule*

Task	Estimated Completion
Conduct initial West Scioto Area Commission, Far West Area Commission and Steering Committee engagement meetings	February-March 2021
Develop study goals and objectives	February-March 2021
Research prior planning and engineering efforts relating to area	February-March 2021
Study the area demographics	March-April 2021
Develop, disperse, and evaluate online questionnaire to identify the key issues and ideas	April-June 2021
Inventory and assess the existing conditions of the area infrastructure	April-May 2021
Review crash data and identified high-crash locations in the area	May-June 2021
Conduct an origin-destination study of the area	June-July 2021
Conduct 2 <sup>nd</sup> Commission and Steering Committee engagement meetings to present completed analysis/findings	August 2021

# Questions / Comments

- Project page on City of Columbus website
- <http://bit.ly/RTMCmobility>
- Comments and questions can be submitted online via Jotform link or sent to [RTMC@columbus.gov](mailto:RTMC@columbus.gov)



## ABOUT THE STUDY

The Renner Rd/Trabue Rd/McKinley Rd corridor (RTMC) serves multiple communities on Columbus west side. Additionally, it provides connectivity to Downtown Columbus, US-33, I-70, and I-670. Like many corridors across the city of Columbus, the RTMC corridor is experiencing significant growth and development bringing increased pressure on the transportation network.

In response to these growing pains, as well as pre-existing challenges on the corridor, the City of Columbus is undertaking a mobility study that will comprehensively and holistically study the corridor. This study will result in realistic strategies, both long term and short term, to support the areas continued economic vitality, improve health and safety, and access to employment opportunities.

The RTMC Mobility Study will be completed in two phases. Phase One is currently underway and is expected to complete in August of 2021. Phase Two will then follow.

## Documents:

[Study Area Map](#)

## Public Comments:

Please submit public comments [here](#) or email [RTMC@columbus.gov](mailto:RTMC@columbus.gov). If emailing, please provide your name and contact information. Anonymous comments will not be accepted.

## CONTACT INFO

Traffic Management  
111 N. Front Street  
Columbus, OH 43215  
Office : (614) 645-3111  
Fax : (614) 645-7805  
Email : [Contact Information](#)