

Clintonville Area Commission

December 2, 2021



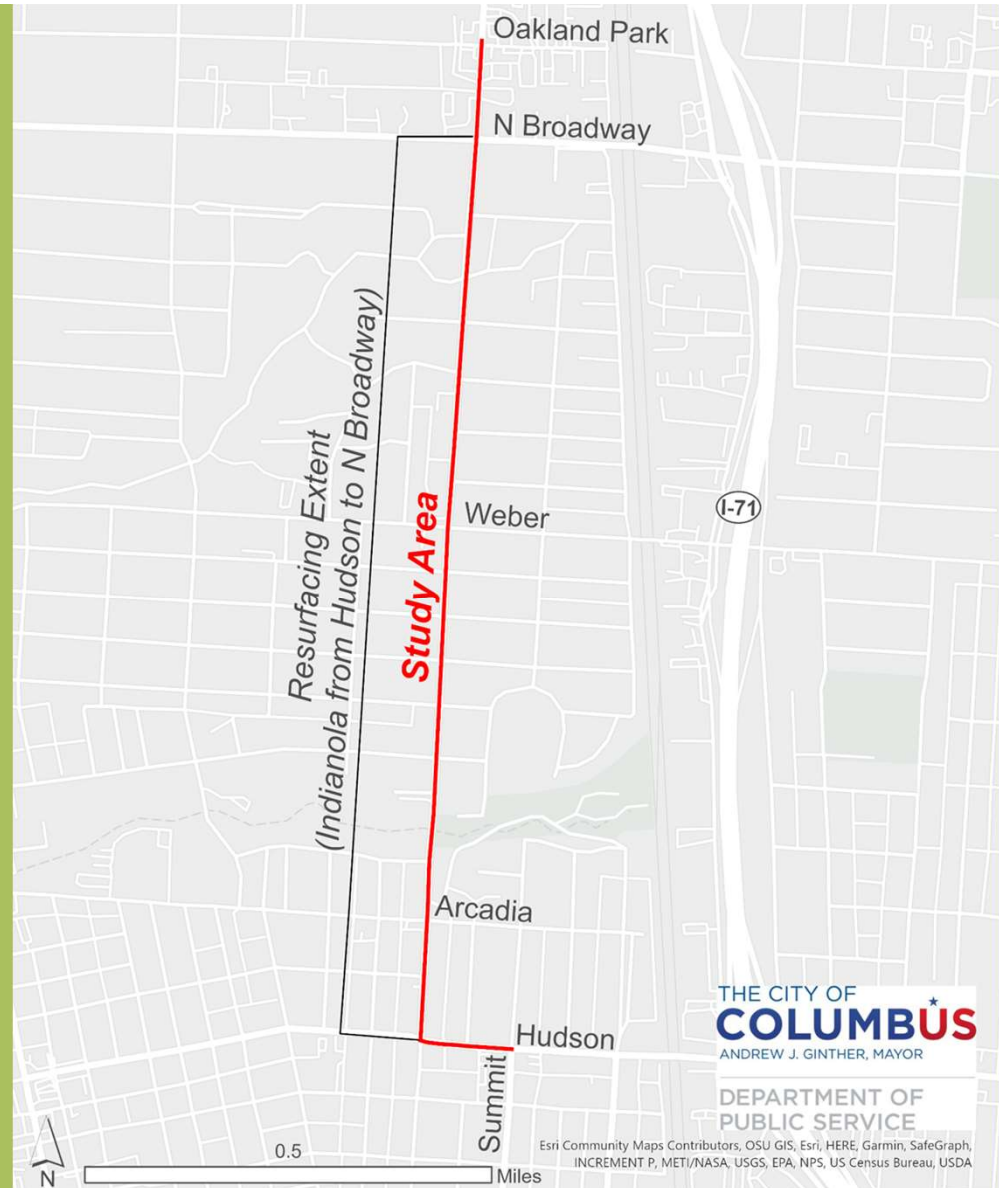
THE CITY OF
COLUMBUS
ANDREW J. GINTHER, MAYOR

DEPARTMENT OF
PUBLIC SERVICE

INDIANOLA AVENUE COMPLETE STREETS STUDY

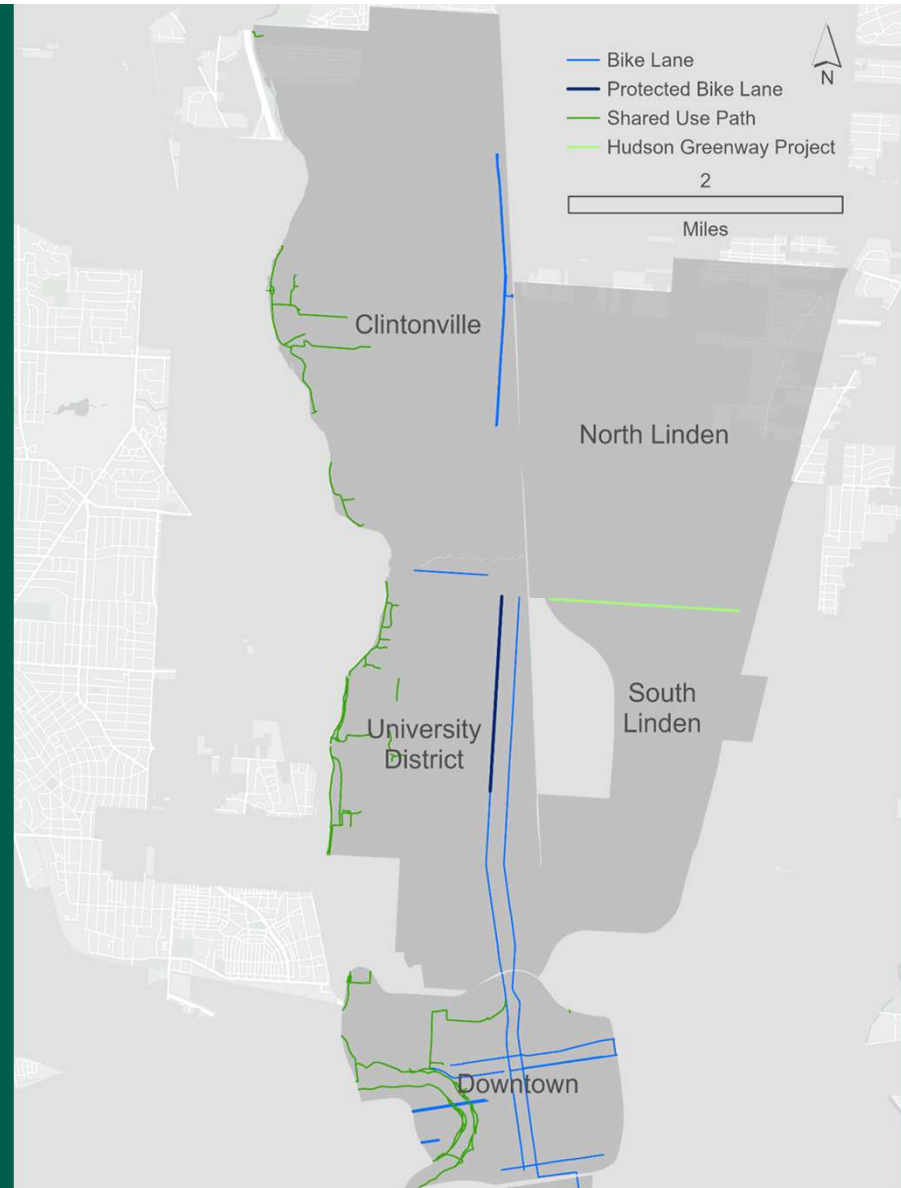
Study Area

- ODOT Urban Repaving Project for Indianola/U.S. 23
 - Hudson to N Broadway
 - Construction planned for late 2023
- Project scope
 - Resurfacing, restriping, and relocating lanes within the existing curb lines
 - Spot curb repair



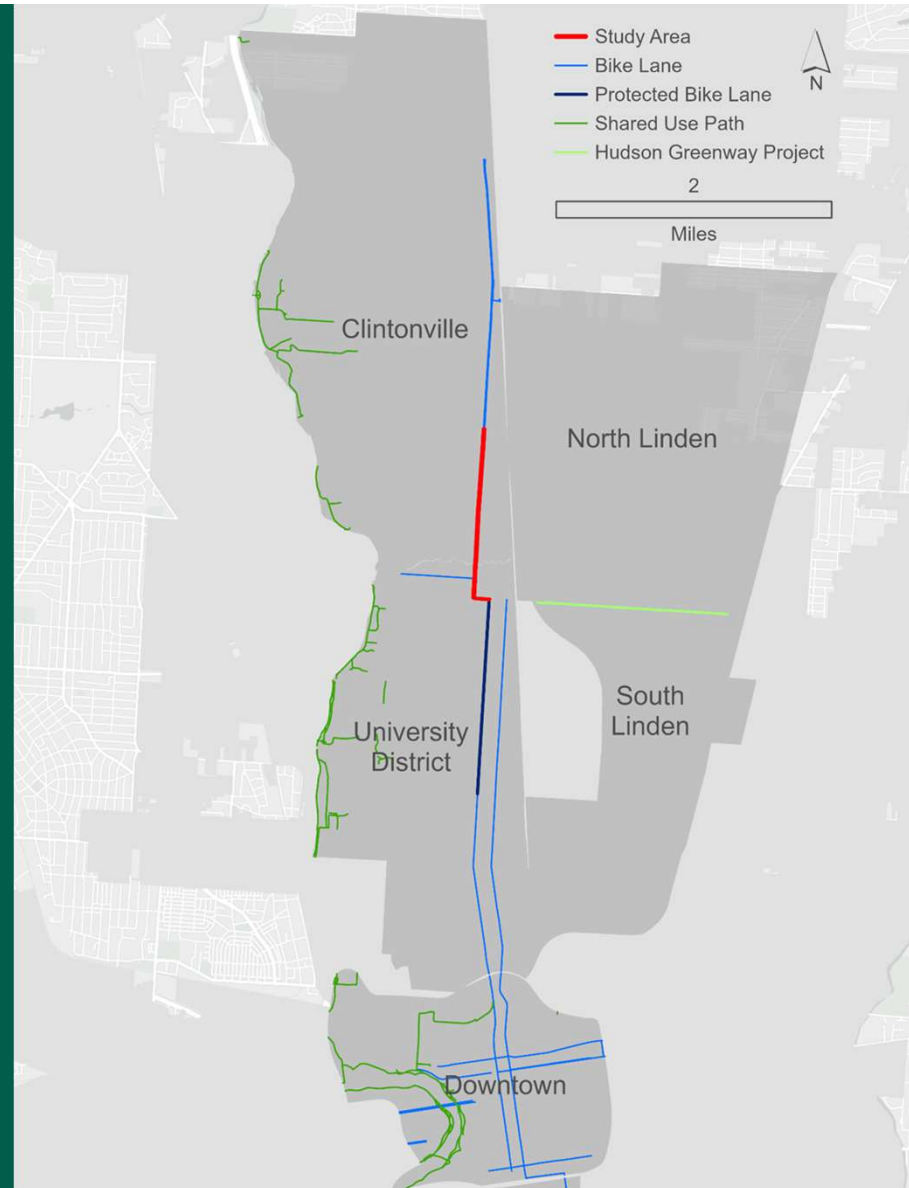
Bikeways

- Network gap between Hudson Street and Oakland Park Avenue



Bikeways

- Network gap between Hudson Street and Oakland Park Avenue (study area)
- Seven miles of continuous facilities if filled from Downtown to Morse Road
- Opportunity to connect to the Summit Street cycle track



Vision Zero Alignment

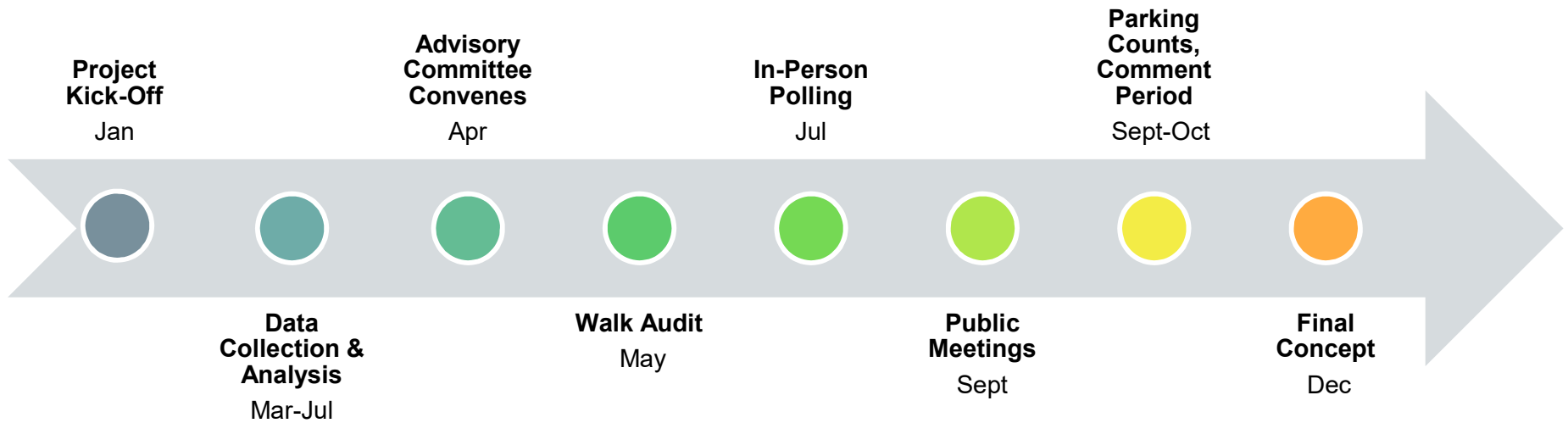
Goal: Plan and build safe streets for all users

- Reduce speeds on High Injury Network
- Reconfigure lanes to include more modes of transportation



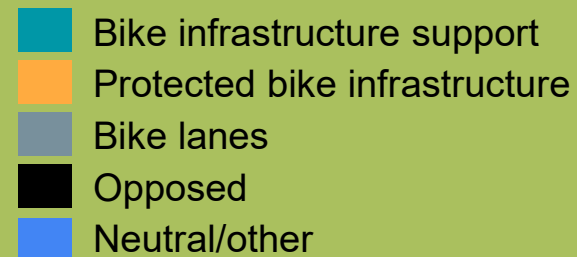
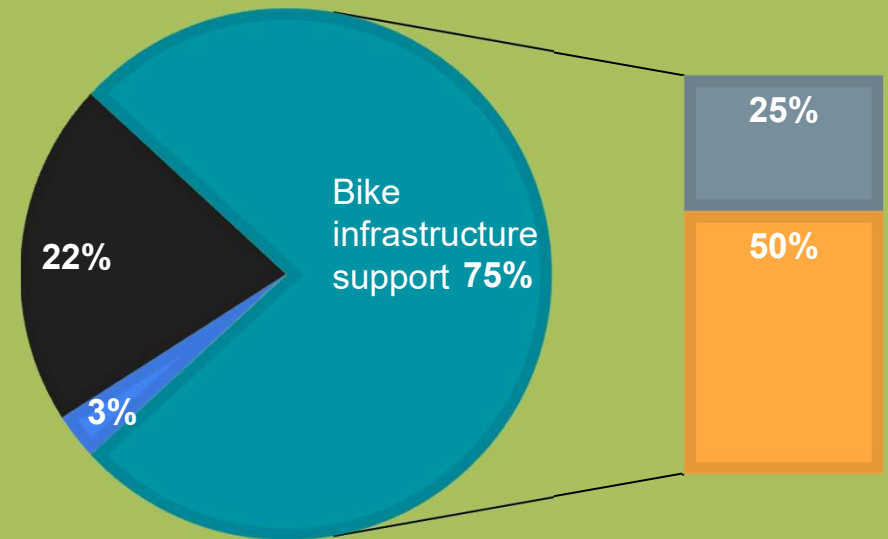
[Vision Zero Action Plan](#)

Timeline (2021)



Public Comments Overview

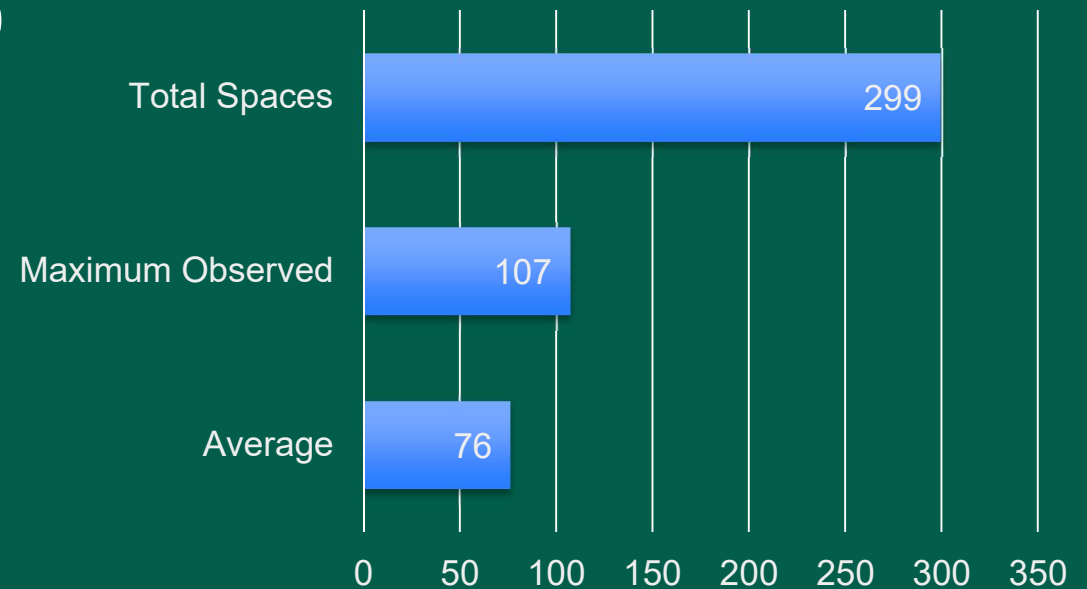
- Two virtual meetings Sept. 16
- Comment period Sept. 16 – end of Oct.
- 186 comments received
- 75% supportive of bike infrastructure
 - 50% overall supportive of protected bike infrastructure
- 22% in opposition (parking removal)



Public engagement report available on the project website: tinyurl.com/cbusindianola

Supplemental Parking Observations

- 25 observation periods over 10 days (Sept. 18 - Oct. 2, 2021)
- 15 out of 31 blocks had a 7% utilization rate (2 or less vehicles)
- Highest parking demand between Weber – Midgard; Kelso – Crestview



Alternatives Analysis

- Alt 1a. No build
- Alt 1b. Remove peak parking restriction; parking on both sides
- Alt 2. Two-way cycle track with parking removed
- Alt 3. Buffered bike lanes with parking removed
- Alt 4. Bike lanes with parking
- Alt 5a. Two-way cycle track with parking on one side
- **Alt 5b. Bike lanes, buffered bike lanes, and parking**

Alt 5b. Bike Lanes, Buffered Bike Lanes, and Parking

Sections (North to South)

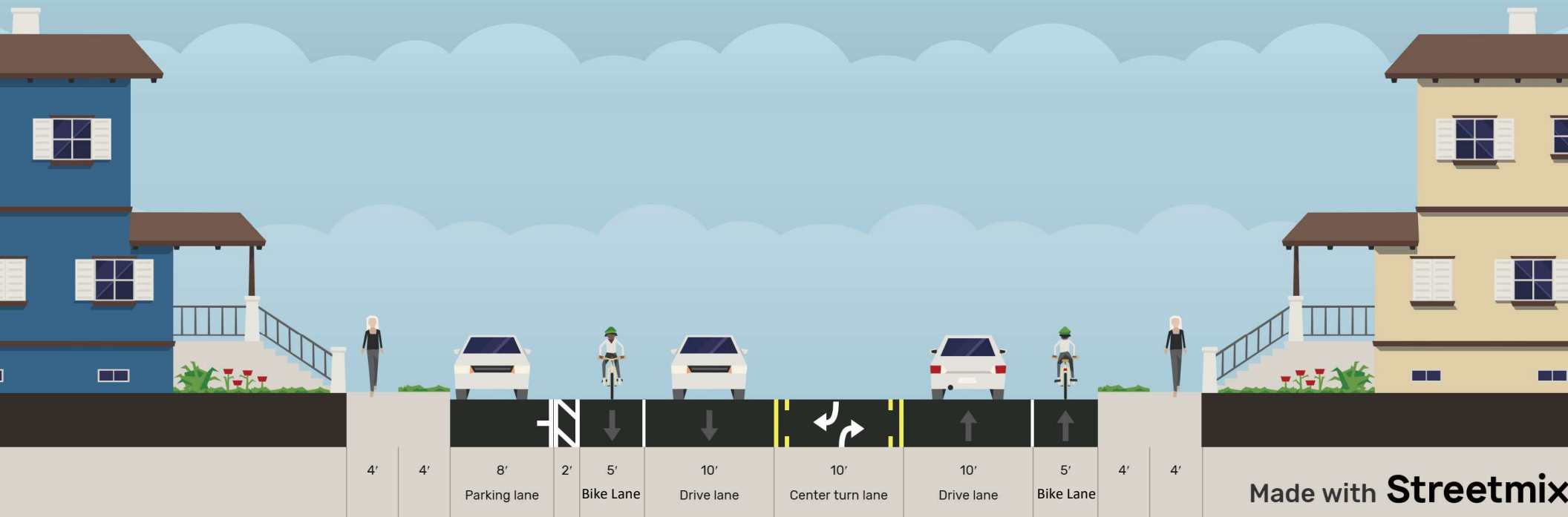
1. N Broadway to Oakland Park
2. Parkview to N Broadway
 - Bike lanes with parking on west side
3. Arcadia to Parkview
 - Bike lanes with parking removed
4. Summit to Arcadia
 - Bikeway connection to cycle track
5. Hudson to Arcadia
 - NB buffered bike lane connecting the Hudson Street bike lane

Alt 5b. N Broadway Intersection (same as Alt 4)



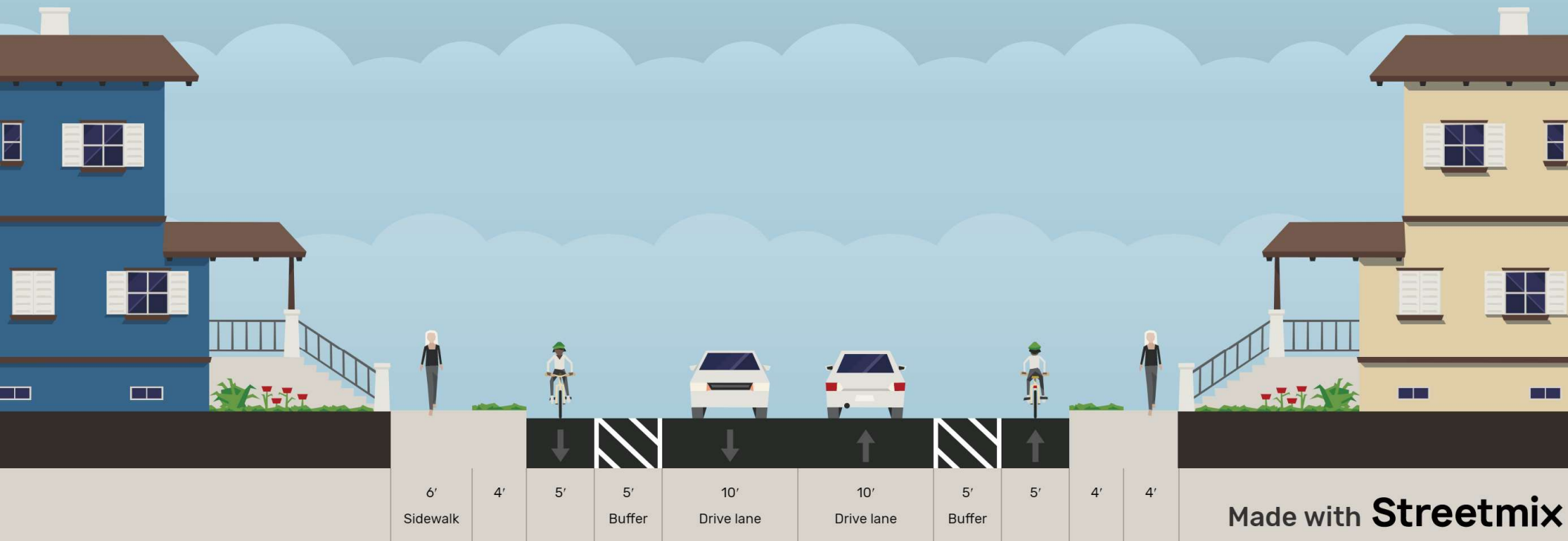
*Note: These images are for illustrative purposes only.
Final pavement markings will be determined in design.*

Alt 5b. N Broadway to Parkview



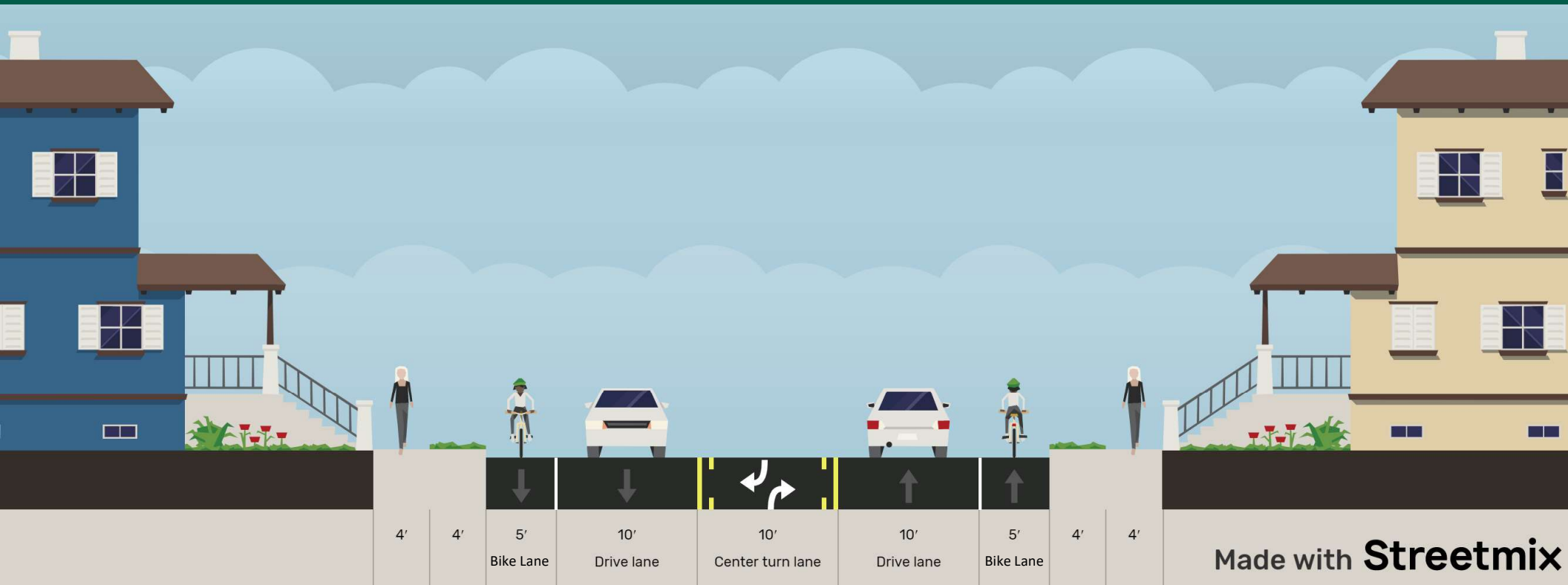
Note: These images are for illustrative purposes only. Final pavement markings will be determined in design.

Alt 5b. Parkview to Cliffside



Note: These images are for illustrative purposes only. Final pavement markings will be determined in design.

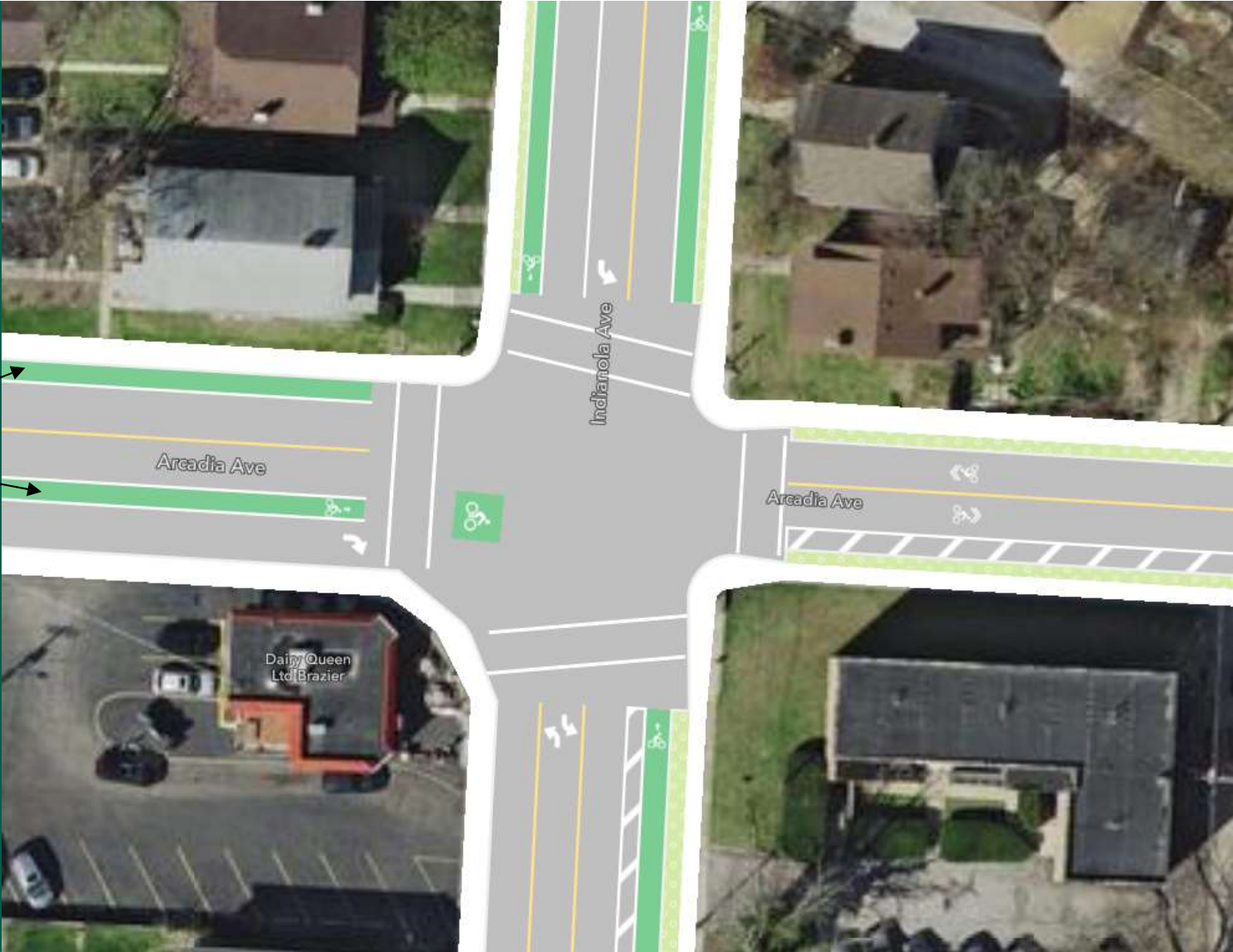
Alt 5b. Cliffside to Arcadia



Note: These images are for illustrative purposes only. Final pavement markings will be determined in design.

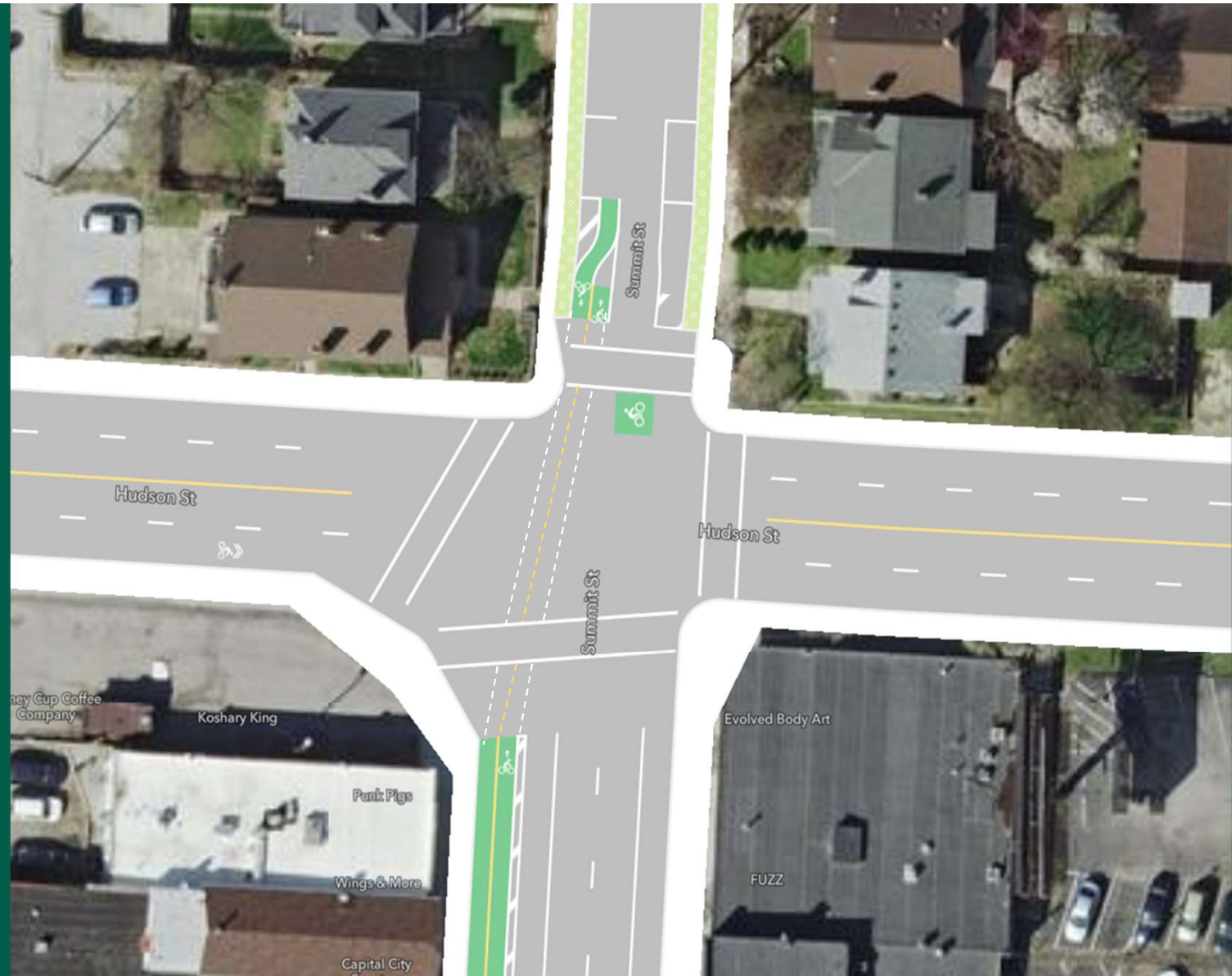
Alt 5b. Arcadia Transition

Existing bike lanes on Arcadia



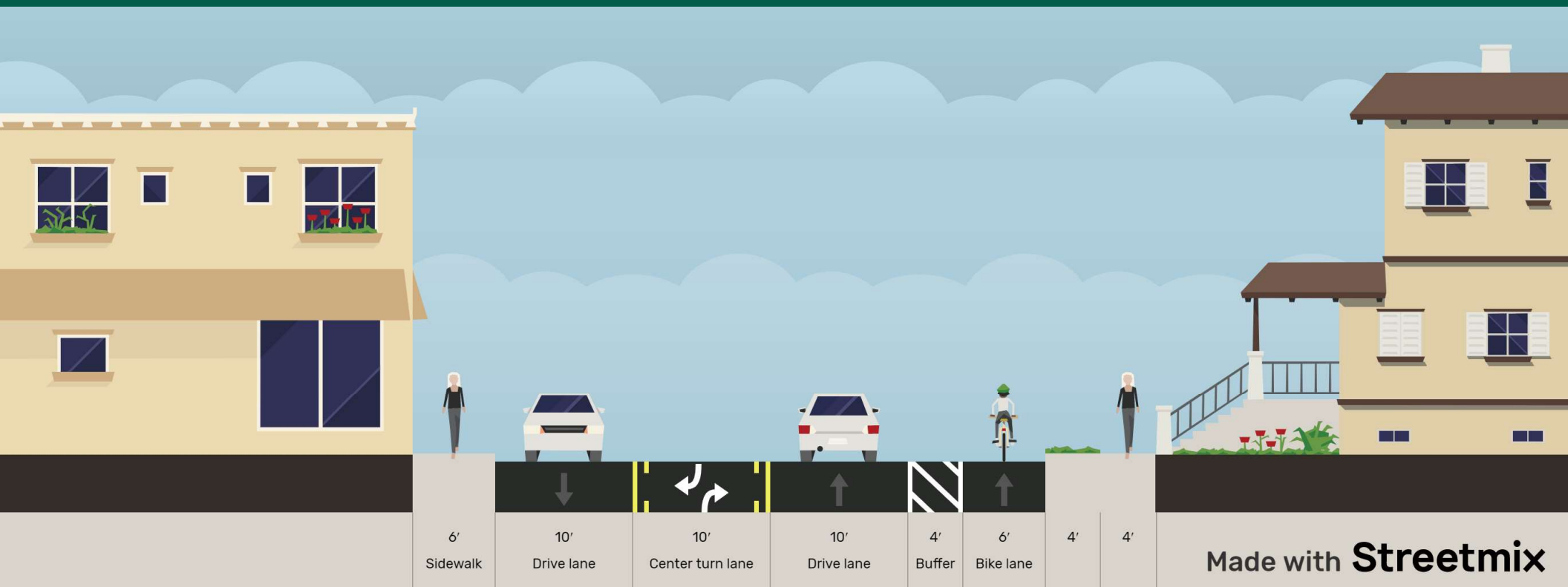
Note: These images are for illustrative purposes only. Final pavement markings will be determined in design.

Alt 5b. Summit St. Connection (same as Alt 4)



Note: These images are for illustrative purposes only. Final pavement markings will be determined in design.

Alt 5b. Arcadia to Hudson



Note: These images are for illustrative purposes only. Final pavement markings will be determined in design.

Alt 5b. Hudson St. Connection

Existing bike lane
on Hudson connection

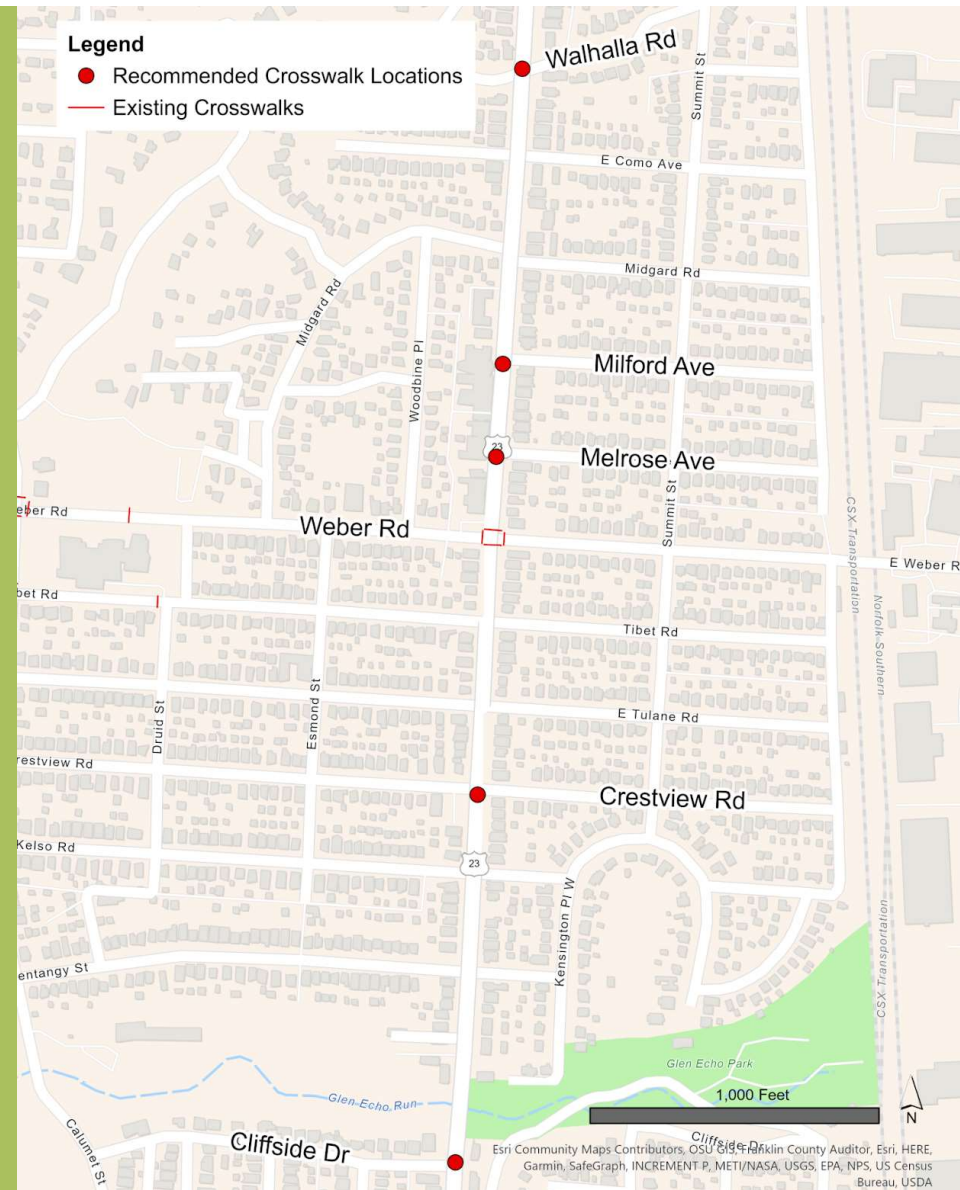


*Note: These images are for illustrative purposes only.
Final pavement markings will be determined in design.*

Crosswalk Recommendations

- Findings support marked ladder-style crosswalks at the following locations:
 - Walhalla Rd*
 - Milford Ave*
 - Melrose Ave*
 - Crestview Rd
 - Cliffside Dr

*Pending COTA bus stop relocation



Next Steps

- Update Area Commissions on recommended alternative
 - Clintonville Area Commission 12/02
 - University Area Commission 12/15
- Design alternative in alignment with urban repaving project
- Project information available at www.tinyurl.com/cbusindianola

