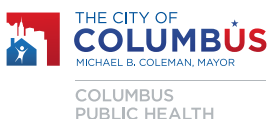


**NORTH  
NEAR NORTH  
EAST  
SOUTHWEST**

## 4 ROUTES



Visit us online... [www.columbus.gov/artwalk/](http://www.columbus.gov/artwalk/)



Art Rides Sponsored by:



Map Design by:



Columbus Art Rides is a self-guided bicycling map and audio tour of several districts in Columbus. These unique maps are an easy way for residents, visitors, and families to get active while seeing great art, architecture, and historical sites around Columbus.

Use the map to choose how long and far you want to ride.

Use a phone or media device to listen to site descriptions.

- **DIAL-IN AUDIO TOUR:** To hear site descriptions over the phone, call (614) 645-2646 and enter the site's 3-digit extension number to hear specific site information.
- **MOBILE APPLICATION:** Download the MyColumbus Mobile App and have all of the Art Walks right on your phone.

## IMPORTANT INFORMATION

Certain segments of these routes use sidewalks or pedestrian areas. Riders must dismount in these areas and walk their bikes across, until the route rejoins traffic on the road.

When listening to the Columbus Art Rides audio tour, riders should come to a full and complete stop, make sure they are a safe distance from the flow of traffic, and then use their mobile devices to access the audio tour.

## KNOW THE LAW & BIKE SAFELY

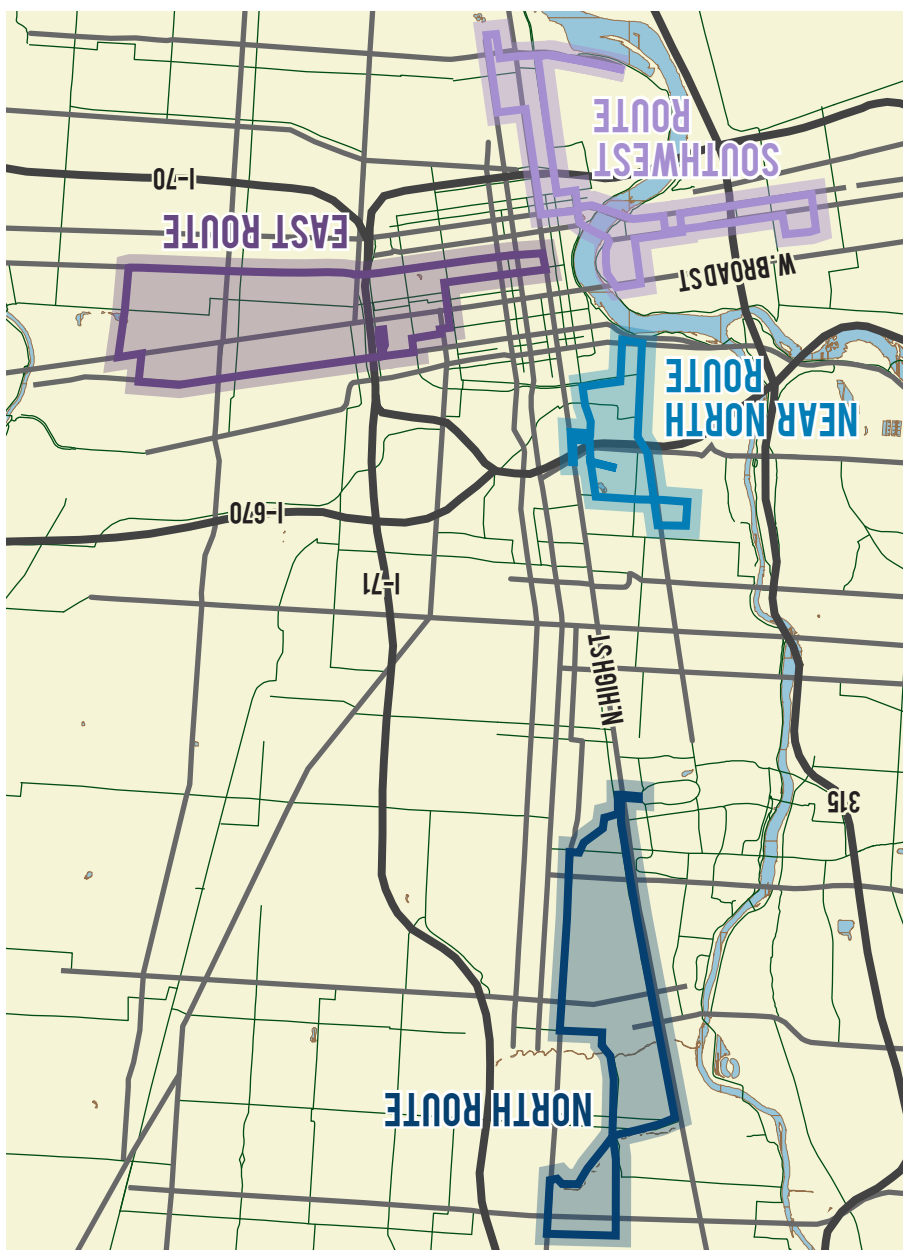
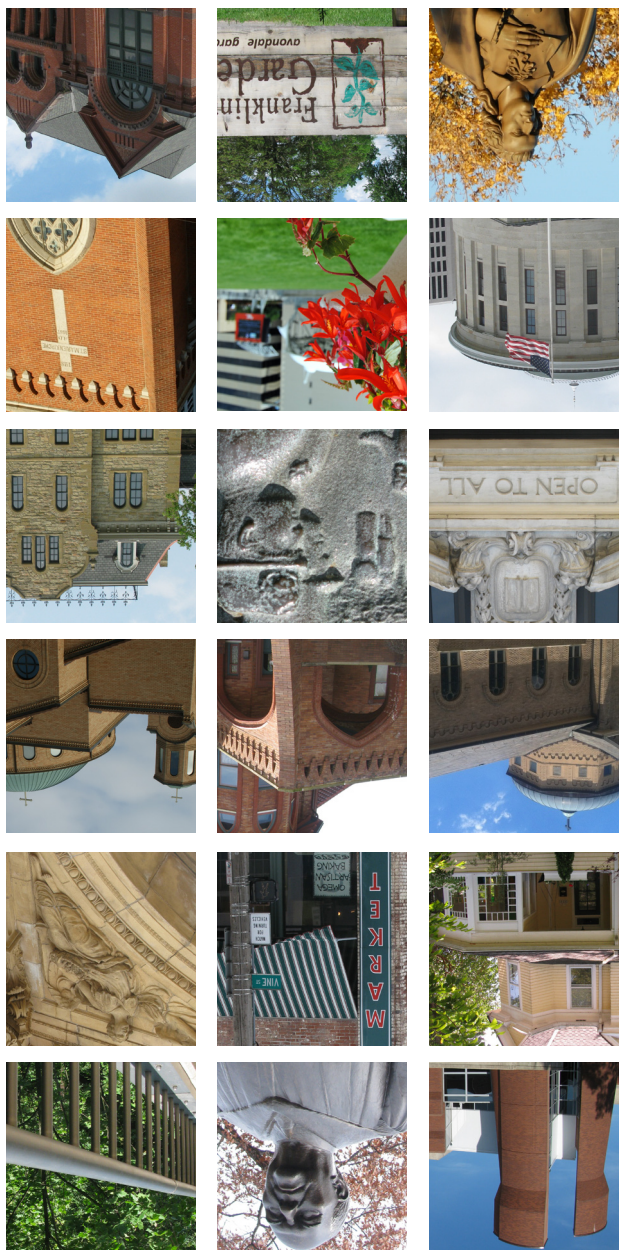
- It is illegal in the City of Columbus to use a cell phone for texting or accessing the Internet while on a bike.
- Obey all traffic laws—come to a complete stop at red lights and wait for the signal to change
- Ride in the street, not on the sidewalk—always yield to pedestrians
- Make eye contact with motorists and pedestrians in the roadway
- Wear a properly fitting helmet—if you can fit more than two fingers between your chin and the strap, it's too loose
- Ride outside the "door zone" of parked cars—opened car doors are hazardous for cyclists
- Be visible. Use a bicycle headlight and taillight at night
- Keep your bike in working order
- Keep your eyes and mind on the road
- Ride predictably and respectfully

More information at <http://columbus.gov/sharetheroad/>

Remember: On Wheels. With Traffic: On Feet. Face Traffic.

## WHY BIKE?

- More physical activity.
- Get to know your neighborhood.
- More people outside means more “eyes on the street” and a safer, more active street life.
- The whole city is within biking distance of your home! Biking instead of driving to these places helps you stay healthy, reduces vehicular traffic, and can save you time and money.





NORTH ROUTE

Please call (614) 645-2646 followed by the 3-digit number to hear location descriptions:

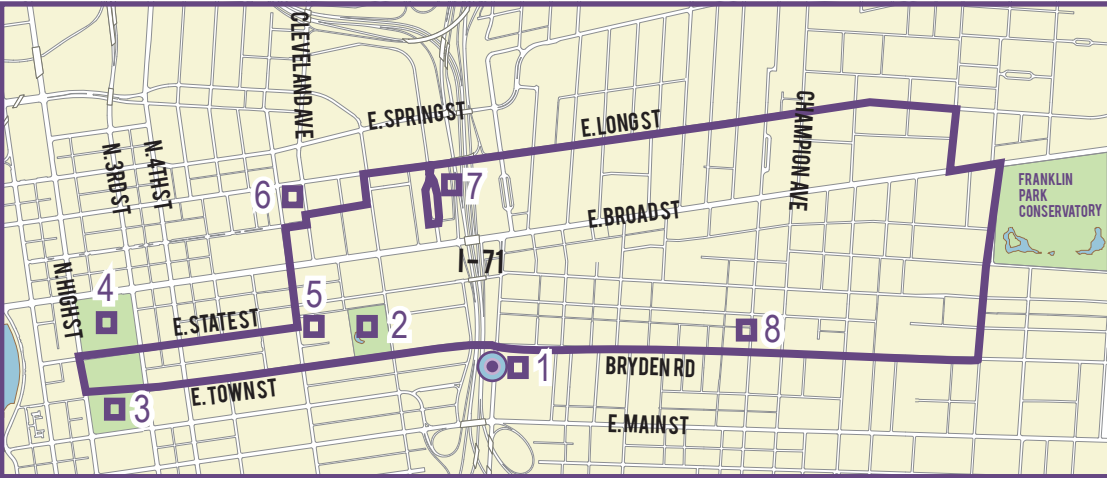
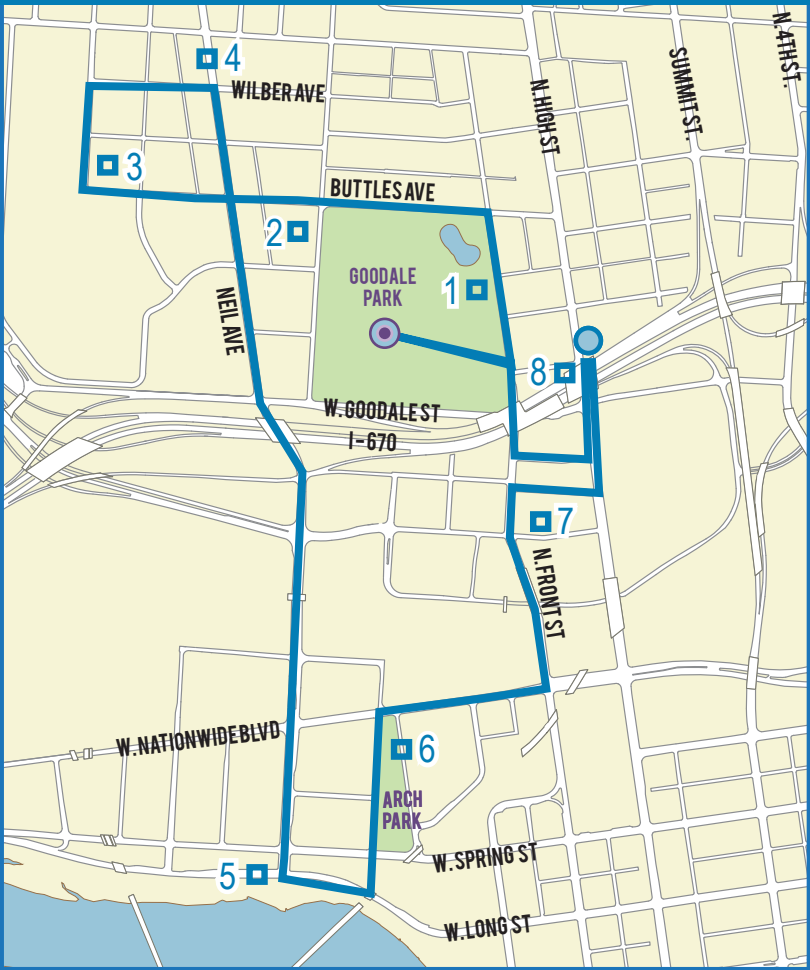
- 1. Walhalla Rd between High St & Indianola Ave - Walhalla Ravine (420)
- 2. 1871 N. High St. - Wexner Center (dismount in plaza area) (256)
- 3. Ohio State Oval (267)
- 4. 200 Crestville Rd. - Clintonville Community Market & Street Mural (412)
- 5. 251 E. Weber Rd - Crestview Junior High/Indianola Alternative (415)
- 6. Calumet between California & Weber - Calumet viaduct & Walhalla Ravine (416)
- 7. E. North Broadway & Calumet - Missing Circles (437)
- 8. 3400 Calumet St. - St. James Episcopal Church (438)



NEAR NORTH ROUTE

Please call (614) 645-2646 followed by the 3-digit number to hear location descriptions:

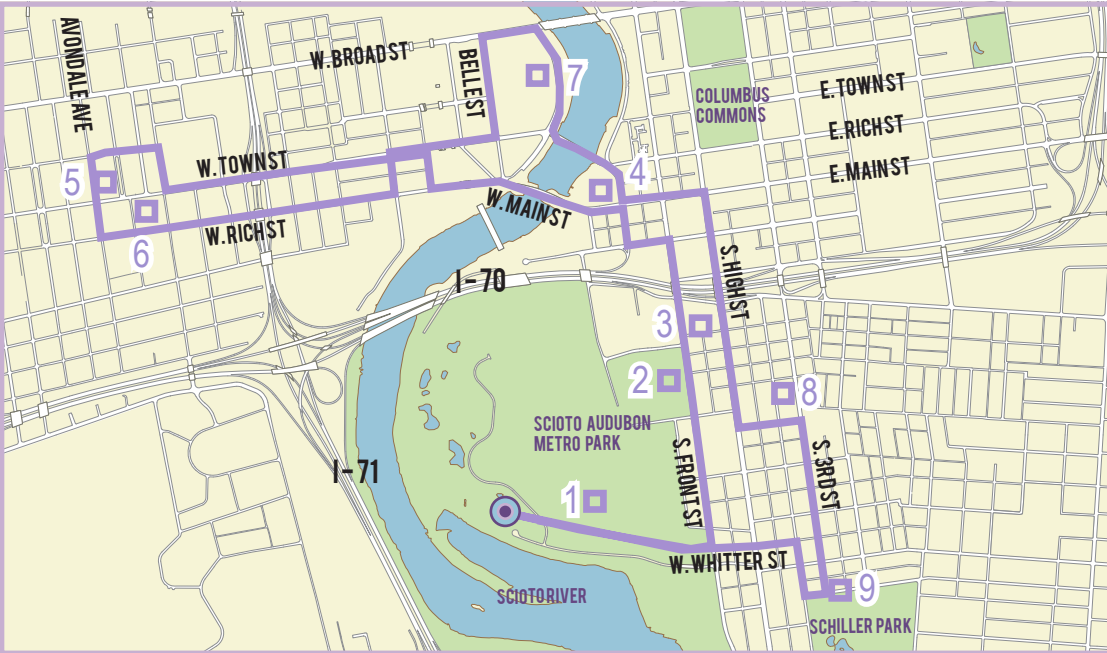
- 1. 120 W. Goodale St - Goodale Park (248)
- 2. 755 Dennison Ave - Sells Circus House (247)
- 3. 386 Buttles Ave - St. Francis Church (243)
- 4. Neil & Wilber - Neil Avenue Architecture (244)
- 5. Between Spring St and Long St - Flowing Kiss Sculpture (145)
- 6. 218 West St - Arch Park (142)
- 7. 59 Spruce St - North Market (140)
- 8. 555 N. High St - Annunciation Greek Orthodox Cathedral (249)



EAST ROUTE

Please call (614) 645-2646 followed by the 3-digit number to hear location descriptions:

- 1. 240 Parsons Ave - Columbus Public Health (124)
- 2. 480 E Town St. - Old Deaf School Park -Topiary Garden (119)
- 3. 160 S High St. - Columbus Commons (589)
- 4. 1 Capitol Square - Ohio Statehouse (174)
- 5. 96 S. Grant Ave. - Columbus Metropolitan Library (116)
- 6. 107 N 9th St - CCAD (107)
- 7. Whitetail Doe Looking Back at Thurber Park & Long Street Cultural Wall (110/111)
- 8. Bryden Road Mansions (391)



SOUTHWEST ROUTE

Please call (614) 645-2646 followed by the 3-digit number to hear location descriptions:

- 1. 505 W. Whittier St - Grange Insurance Audubon Center (616)
- 2. Between 605 and 585 S Front St - King Gambrinus Statue (610)
- 3. Brewery buildings (607-608, 620-622)
- 4. 233 Civic Center Dr - Bicentennial Park (573)
- 5. 141 Hawkes Ave - Avondale Elementary School (362)
- 6. 909 W. Rich St. - Franklinton Gardens (361)
- 7. 333 W. Broad St. - East Side of COSI - View of Downtown (350)
- 8. 684 S. Third St - St. Mary's Church (312)
- 9. Schiller Park North, 3rd St entrance (316)

MAP LEGEND

- Start/End Location
- Turn Around Location
- Site Location
- North Route - 6.1 miles
- Near North Route - 4.0 miles
- East Route - 5.9 miles
- Southwest Route - 6.7 miles